

# First time Citrix install on Mac OS

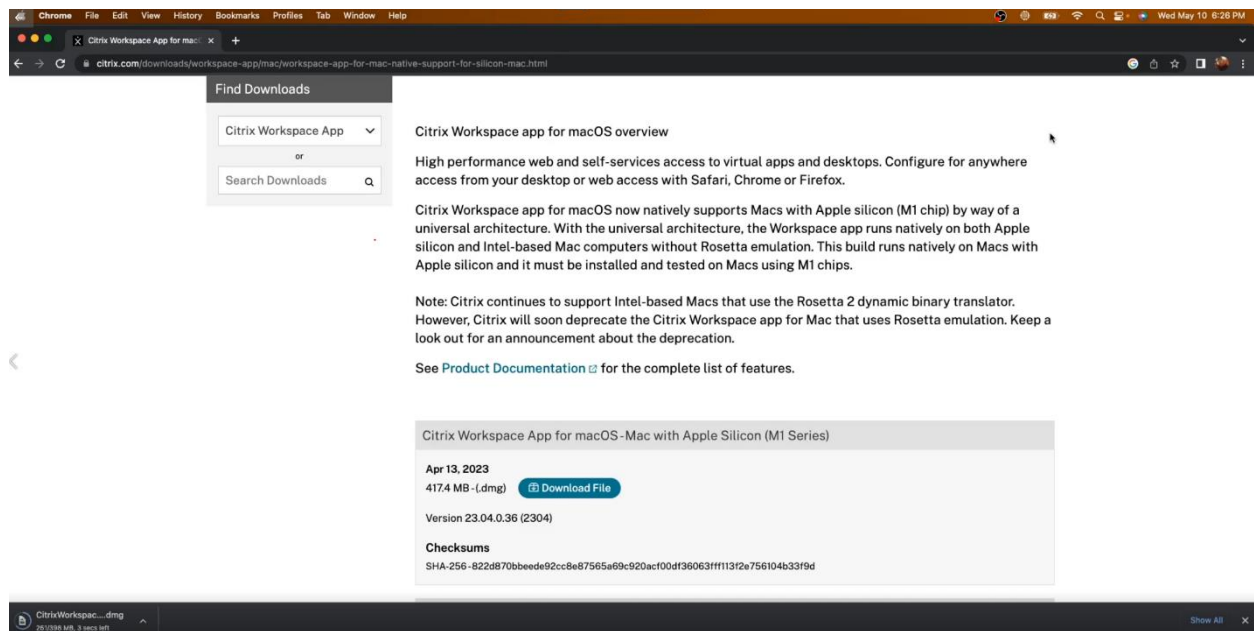
Identify Your MAC Version

New M2 Mac Version of the install

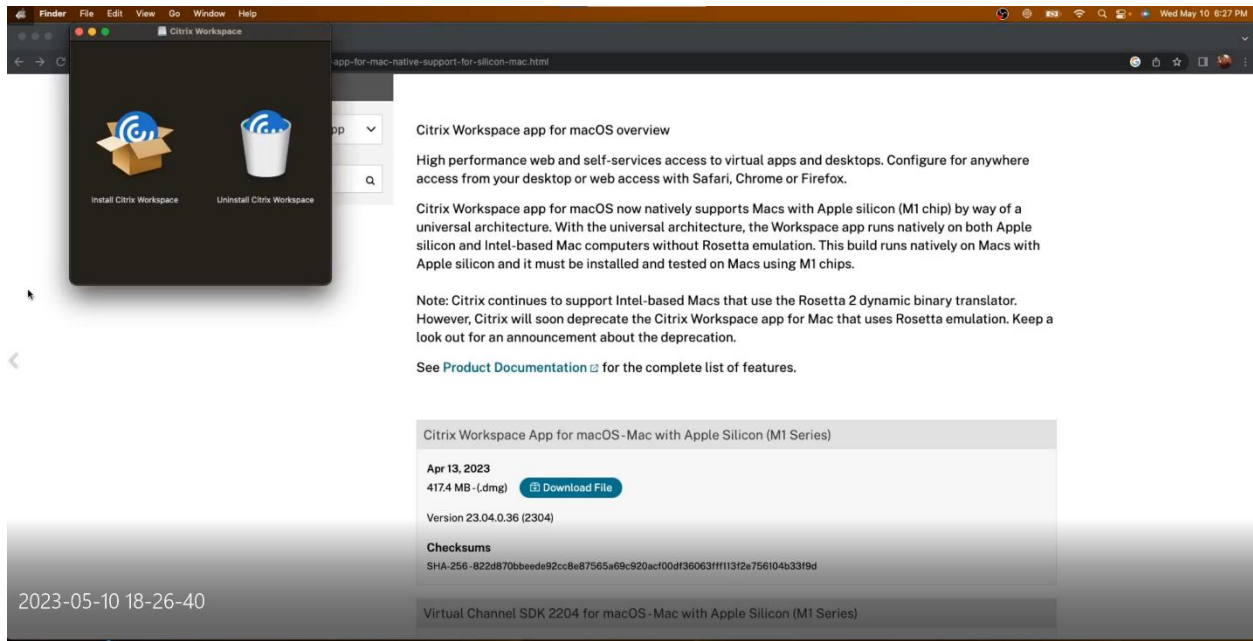
<https://www.citrix.com/downloads/workspace-app/mac/workspace-app-for-mac-latest.html>

Older M1 and previous models

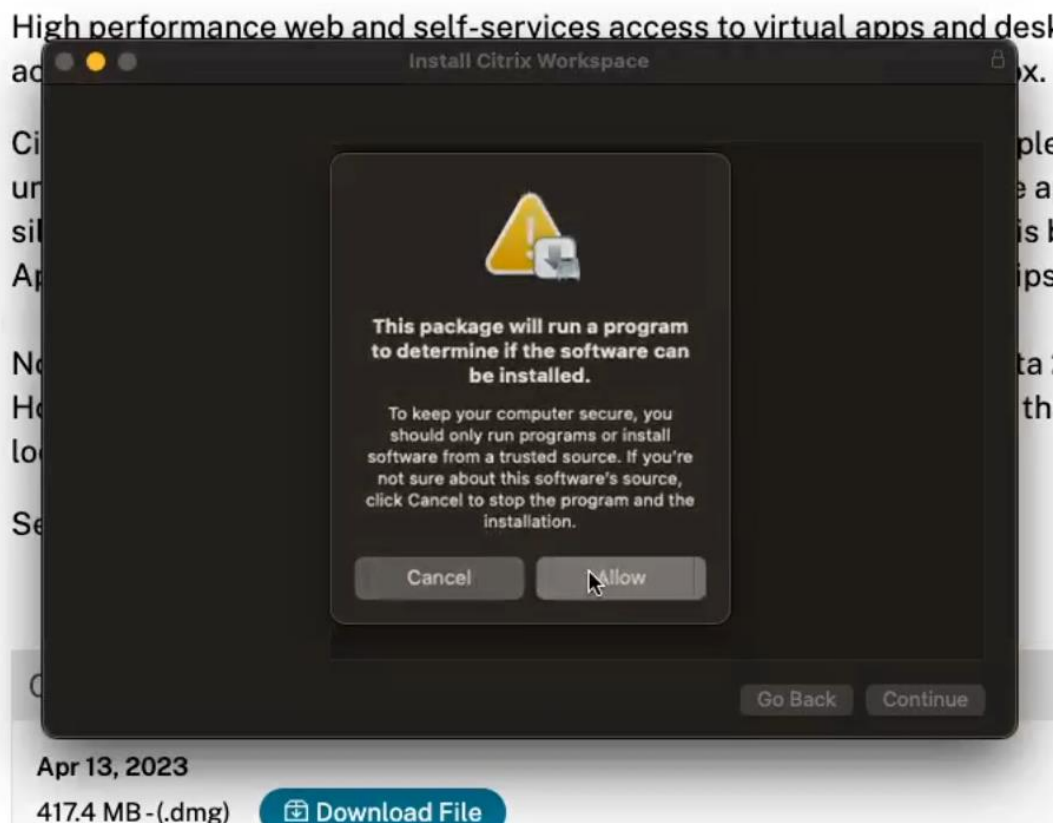
<https://www.citrix.com/downloads/workspace-app/mac/workspace-app-for-mac-native-support-for-silicon-mac.html>



-Download the proper version for your Mac then open the DMG

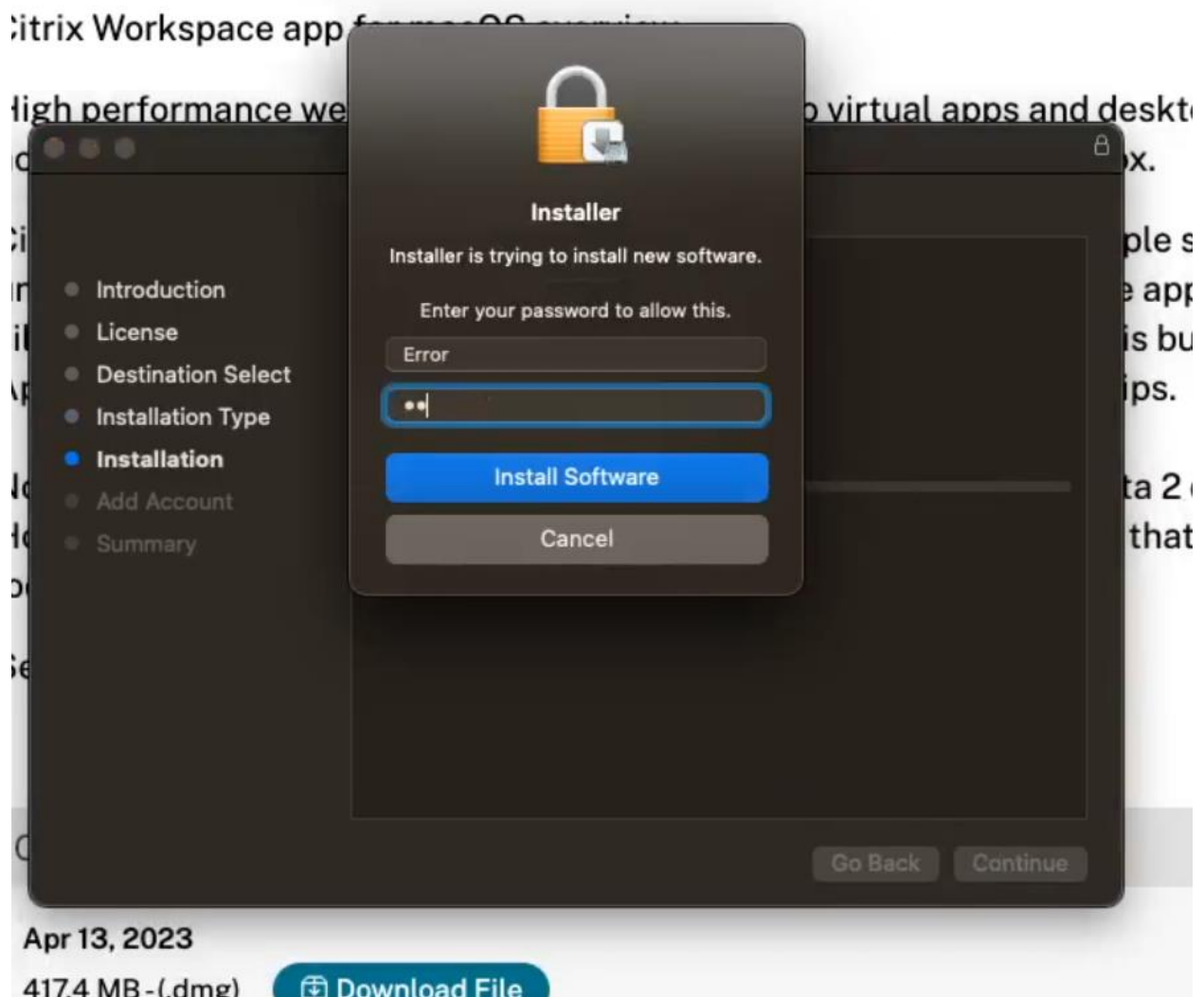


-Once the DMG opens it pops up with Install Citrix Workspace Click install

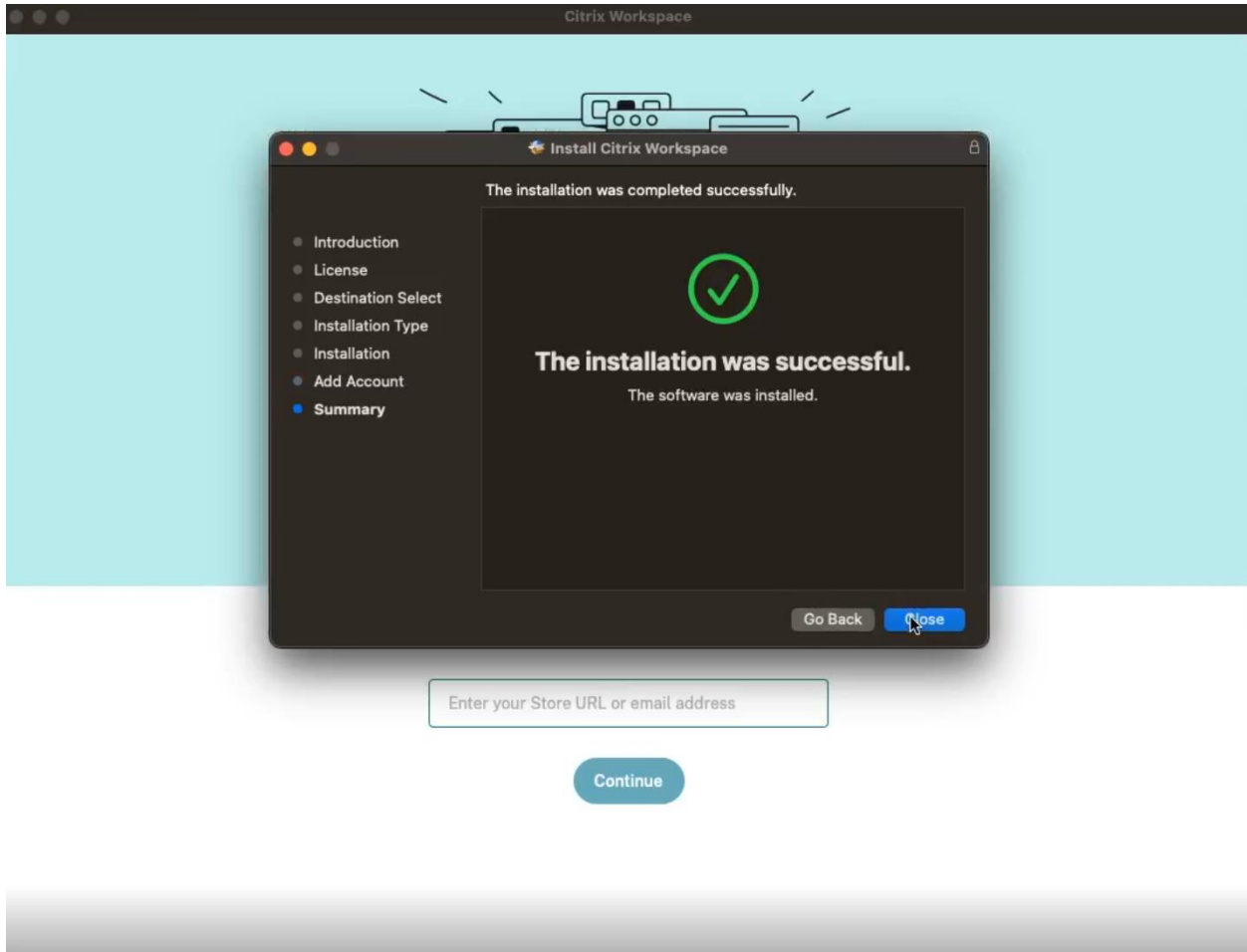


-If you downloaded the proper version of the installer for your MacBook or IMAC it will allow you to proceed if not attempt the other download above. (Some older versions of MAC's may not be supported on these versions of citrix and checking for a downgraded version could work)

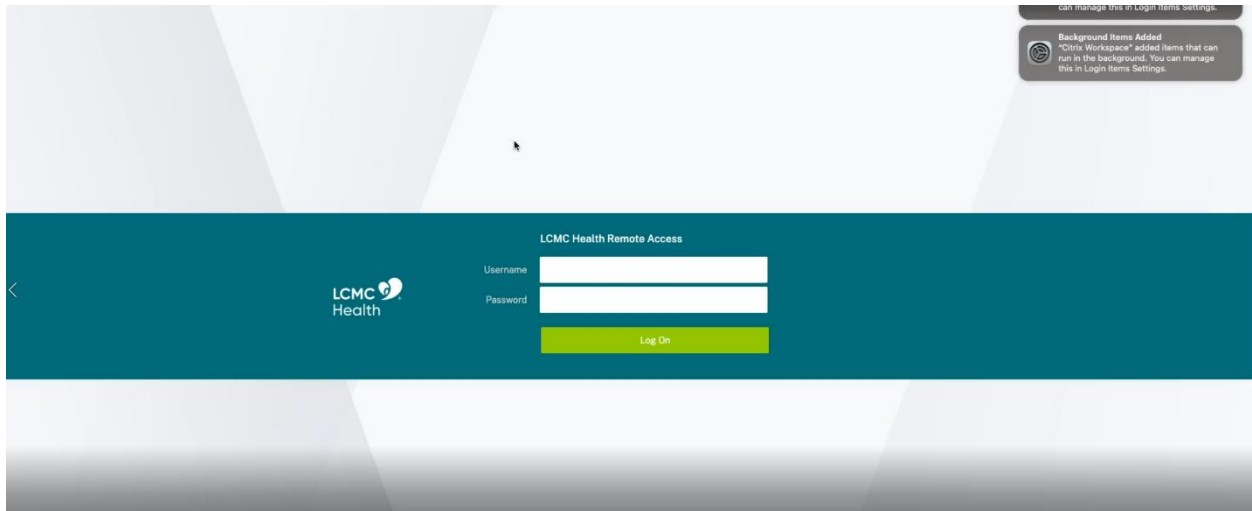
-Type in your devices Admin Credentials



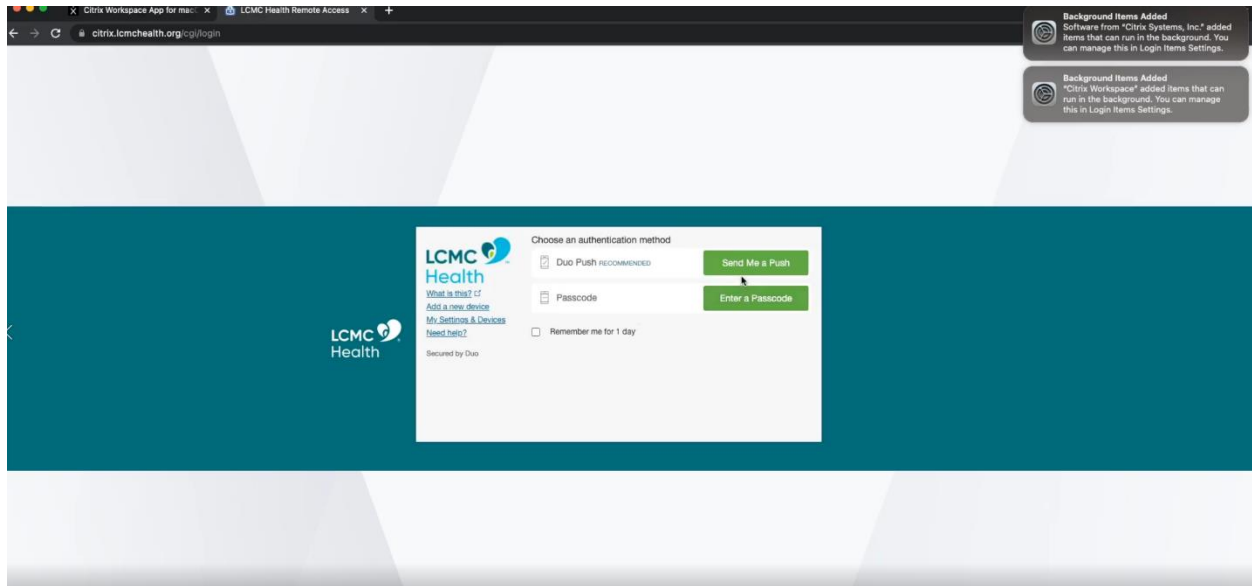
-Once install is completed don't add account this functionality isn't working on our Mac os versions of citrix



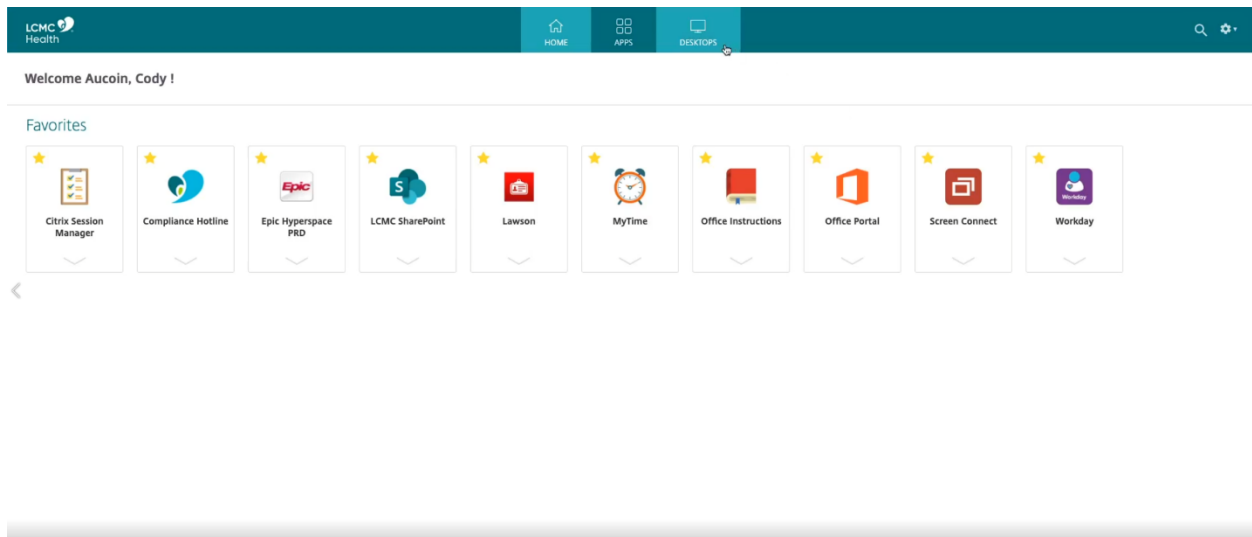
-Go to <https://citrix.lcmchealth.org/> once the install is completed



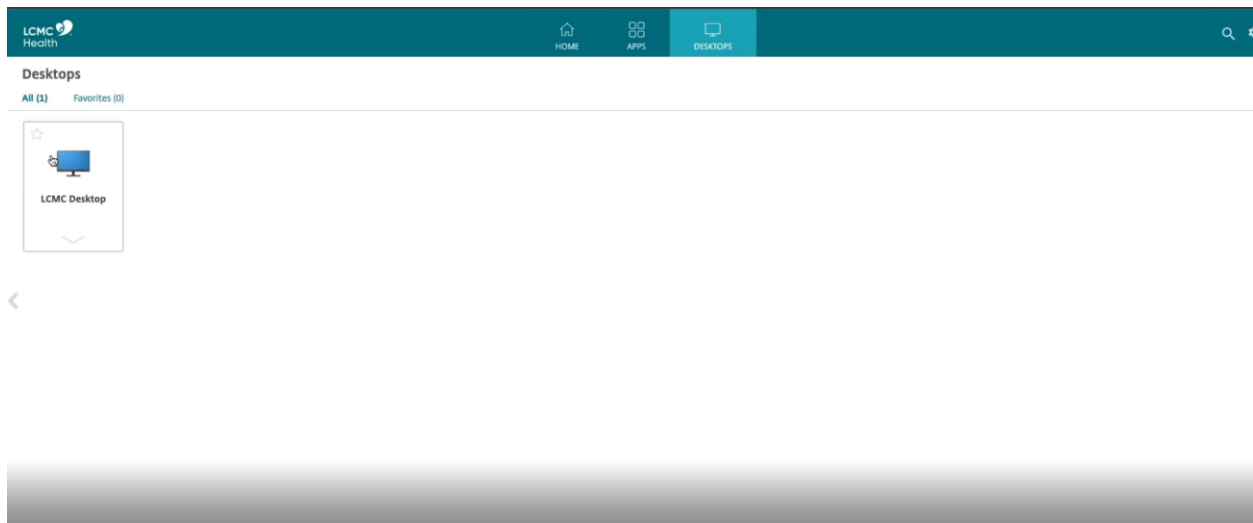
-Sign in on here with LCMC login please make sure you have duo already setup as you cant proceed if not (<https://duo.lcmchealth.org/> make sure you have the phone app downloaded as well)



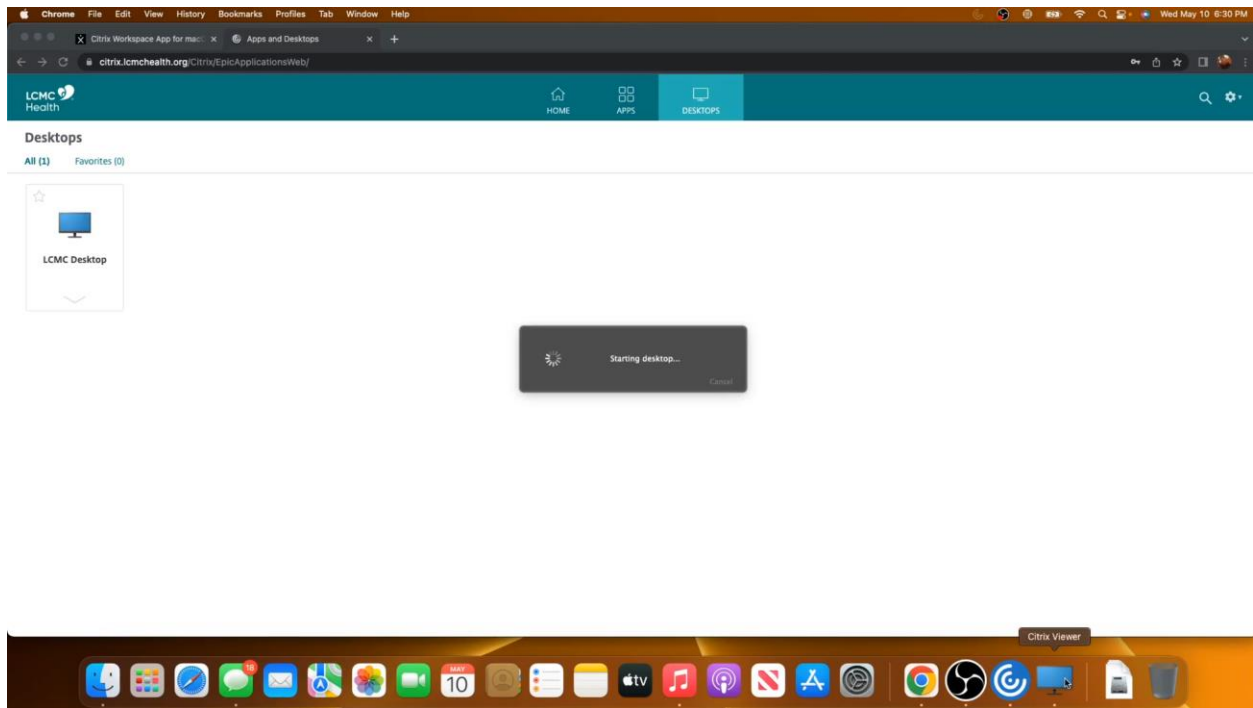
-Once you sign in press send me a push and a Duo notification will pop up on your device



-Now we're going to navigate to Desktop (In the Middle of the LCMC bar)



-Now click LCMC Desktop



The application should open up Citrix Viewer on your Mac Dock

It will now open up a windows environment computer to access Epic and LCMC Apps